



Available Apartments Include Q-1, Q-3 and S-3

A Village Apartment is ideal for anyone who enjoys an independent and active lifestyle. The apartments are nestled among acres of mature cedar and fir trees, and are a maintenance-free alternative for today's seniors. These apartments afford all the privacy, comforts and conveniences of home without the burden of upkeep. All our Village Apartments offer an optional security system, assigned parking and, most importantly, priority access to our Assisted Living and Skilled Nursing Facility.

Our spacious 3 bedroom Village Apartments are ideal for those who desire more space to pursue hobbies or simply relax. We have units available in both the S and Q Buildings so you can choose your own location. These units have 1,780 sq. ft. of living space and feature outdoor balconies and patios with a scenic backdrop. All appliances included.



For more information or to schedule a tour, please call 360-652-2645.
Warm Beach Senior Community, 20420 Marine Dr., Stanwood
www.warmbeach.org





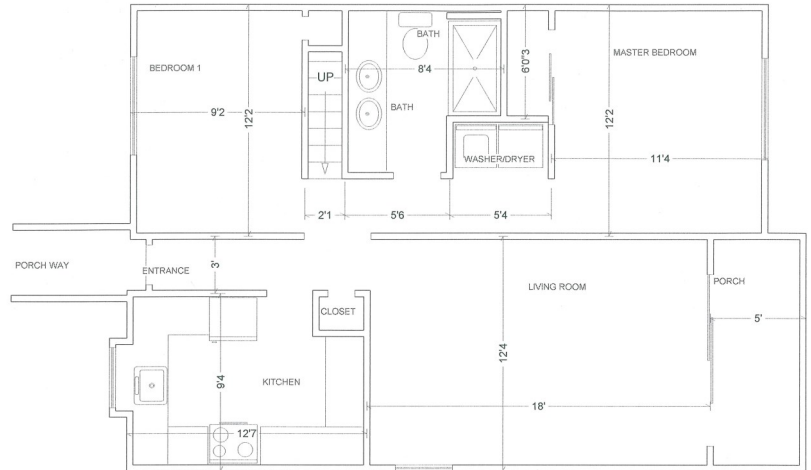
"We absolutely love it here. We have family and friends all around.
I can't think of anywhere else I'd rather be."
~Lorraine & Dick J.

The Monthly Fee Includes:

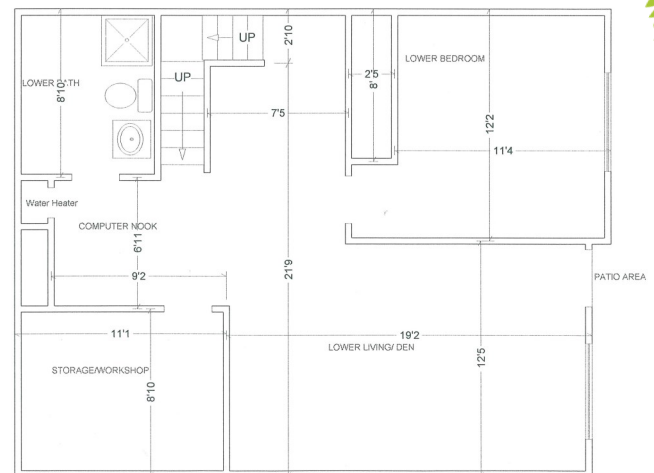
- One meal per week in restaurant
- Activities & exercise programs
- Sewer, water, garbage, cable TV
- On-site chaplain service
- 24/7 campus security patrols
- On-campus outpatient therapy
- On-site library
- Access to pool, walking trails & more!

UPPER LEVEL

**Village Apartment
Three Bedroom Floorplan**



LOWER LEVEL (VARIES)



Three Bedroom Village Apartments
Increasing Entrance Fee: \$168,000
Decreasing Entrance Fee: \$115,000
2 nd Person Entrance Fee: +12% of Chosen Entrance Fee
Monthly Fee: \$1,930
2 nd Person Fee: \$405

***Note:** With an **Increasing Entrance Fee** you will receive a 40% refund if you choose to leave the 1st year of your residency. The refund increases each year for 15 years to a maximum of 60%. With a **Decreasing Entrance Fee** you would receive a 60% refund if you choose to leave during your 1st year of residency; however, your refund decreases 20% per year until it reaches zero after 4 years.

***Includes priority access to our Assisted Living and Skilled Nursing, together with 20 Lifetime Care Days for our Assisted Living Studios or our Health Care Center.**

The only full service retirement community in Snohomish County!

